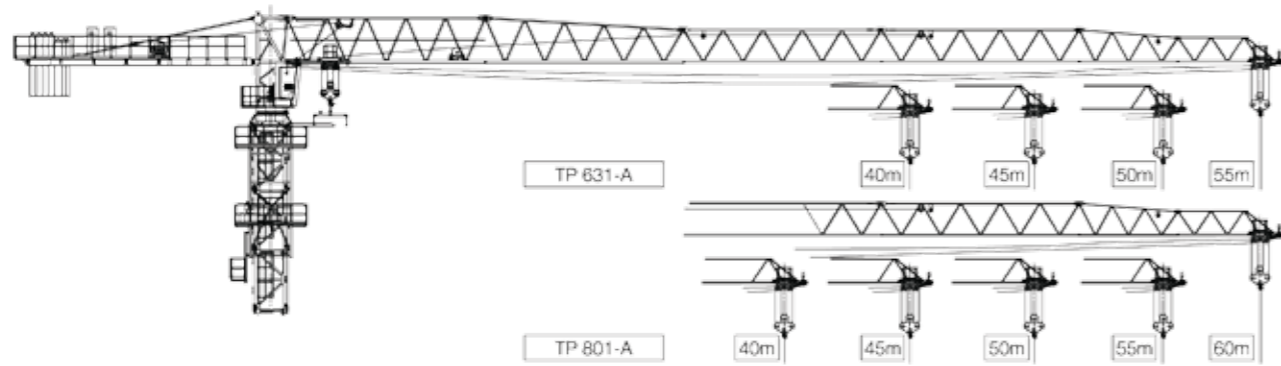


# FLAT TOP

TP 631 - A & TP 801 - A



## TP 631 - A

### RADIUS AND CAPACITY

JIB (m)	FALL	R (Cmax)	C(max) t	10	15	18	20	23	25	30	35	40	45	50	55
55	2	3.00	30.6	3.00	3.00	3.00	3.00	3.00	3.00	3.00	2.72	2.34	2.04	1.80	1.60
	4	6.00	16.6	6.00	6.00	5.55	5.08	4.44	3.93	3.17	2.62	2.22	1.91	1.66	1.45
50	2	3.00	34.6	3.00	3.00	3.00	3.00	3.00	3.00	3.00	2.88	2.48	2.16	2.00	
	4	6.00	17.8	6.00	6.00	6.00	5.58	4.88	4.32	3.49	2.90	2.46	2.12	1.85	
45	2	3.00	35.9	3.00	3.00	3.00	3.00	3.00	3.00	3.00	3.00	2.75	2.40		
	4	6.00	19.0	6.00	6.00	6.00	5.87	5.14	4.55	3.69	3.07	2.61	2.25		
40	2	3.00	37.1	3.00	3.00	3.00	3.00	3.00	3.00	3.00	3.00	2.90			
	4	6.00	19.3	6.00	6.00	6.00	5.94	5.39	4.78	3.88	3.23	2.75			
35	2	3.00	35.0	3.00	3.00	3.00	3.00	3.00	3.00	3.00	3.00	3.00			
	4	6.00	19.9	6.00	6.00	6.00	5.98	5.66	5.02	4.07	3.40				
30	2	3.00	30.0	3.00	3.00	3.00	3.00	3.00	3.00	3.00	3.00	3.00			
	4	6.00	20.5	6.00	6.00	6.00	6.00	5.83	5.17	4.20					

### WINCH SPEED

Hoisting	40m			50m			KW
	m/min	T	3	m/min	T	6	
	80.5	1.2	3	40.6	3	6	24/24/5.4
Trolleying	m/min			43.4/21.7			3.3/2.2
Slewing	r/min			0.68			3.7 x 2
Climbing	m/min			0.4			5.5
Necessary electric power							40.2
Main supply							~380V / 50Hz
Jib length	45			50			56
Counterbalance	12.9			13.5			15.2

## TP 801 - A

### RADIUS AND CAPACITY

JIB (m)	FALL	R (Cmax)	C(max) t	10	15	18	20	23	25	30	35	40	45	50	55	60
60	2	4.00	29.1	4.00	4.00	4.00	4.00	4.00	3.71	3.10	2.65	2.30	2.02	1.79	1.60	
	4	8.00	14.6	8.00	7.78	6.32	5.60	4.76	4.32	3.47	2.87	2.43	2.08	1.81	1.59	1.40
55	2	4.00	31.6	4.00	4.00	4.00	4.00	4.00	4.00	4.00	3.42	2.93	2.55	2.25	2.00	
	4	8.00	16.6	8.00	8.00	7.18	6.37	5.44	4.94	4.00	3.34	2.84	2.46	2.15	1.90	
50	2	4.00	34.6	4.00	4.00	4.00	4.00	4.00	4.00	4.00	3.78	3.25	2.83	2.50		
	4	8.00	17.8	8.00	8.00	7.89	7.01	5.99	5.45	4.42	3.70	3.15	2.73	2.40		
45	2	4.00	36.5	4.00	4.00	4.00	4.00	4.00	4.00	4.00	4.00	3.44	3.00			
	4	8.00	19.0	8.00	8.00	8.00	7.39	6.32	5.75	4.67	3.91	3.34	2.90			
40	2	4.00	37.1	4.00	4.00	4.00	4.00	4.00	4.00	4.00	4.00	3.50				
	4	8.00	19.3	8.00	8.00	8.00	7.51	6.43	5.85	4.75	3.98	3.40				
35	2	4.00	40.0	4.00	4.00	4.00	4.00	4.00	4.00	4.00	4.00					
	4	8.00	19.9	8.00	8.00	8.00	7.91	6.77	6.16	5.01	4.20					
30	2	4.00	30.0	4.00	4.00	4.00	4.00	4.00	4.00	4.00						
	4	8.00	20.5	8.00	8.00	8.00	8.00	6.88	6.27	5.10						

### WINCH SPEED

Hoisting	48m			54m			KW
	m/min	T	4	m/min	T	8	
	92	2	4	46	4	8	30/30
Trolleying	m/min			42.8/21.4			4.5/3
Slewing	r/min			0.62			3.7 x 2
Climbing	m/min			0.4			5.5
Necessary electric power							47.4
Main supply							~380V / 50Hz
Jib length	48			54			60
Counterbalance	12.8			15.7			17.6