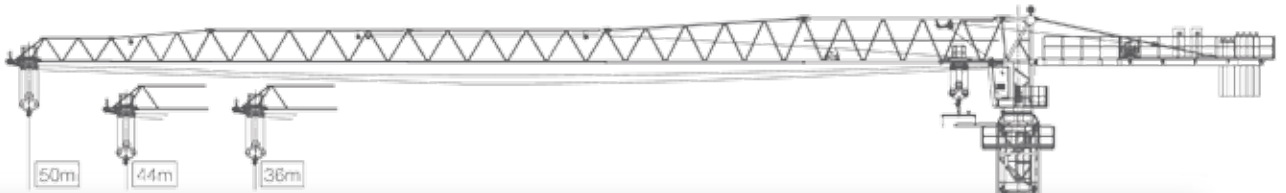


# FLAT TOP

TP 501 - A



## RADIUS AND CAPACITY

ALCANCES Y CARGAS - PORTEE ET CHARGES

Jib length = 50m

R(m)	3-16,00	18	20	22	24	26,8	30	32,6	36	38,4	42	44,2	48	50
a=2	2,25								2,37	2,2	1,97	1,86	1,68	1,5
a=4	5,0	4,8	4,4	3,93	3,55	3,11	2,71	2,45	2,16	1,9	1,77	1,6	1,4	1,35

Jib length = 44m







R(m)	3-16,00	18	20	22	24	26,8	30	32,6	36	38,4	42	44
a=2	2,25								2,25	2,2	2,0	1,9
a=4	5,0	4,8	4,2	3,7	3,15	3,0	2,6	2,5	2,0	1,8	1,7	1,5

Jib length = 38m

R(m)	3-16,00	18	20	22	24	26,8	30	32,6	36	38
a=2	2,25								2,25	2,25
a=4	5,0	4,9	4,7	4,2	3,81	3,34	2,92	2,64	2,33	2,15

## WINCH SPEED

VELOCIDAD MECANISMOS - VITESSE MACANISMES

Hoisting 							KW
	m/min	80.5	40.6	8.7	40.3	20.3	4.35
	T	1	2.5	2.5	2	5	5
Trolleying 	m/min 38.6/25.2						2.2/1.5
Slewing 	r/min 0.75						3.7 x 2
Climbing 	m/min 0.4						4
Necessary electric power							28.6/37.6
Main supply							~380V / 50Hz
Jib length				50			44
Counterbalance				9.252			7.8

