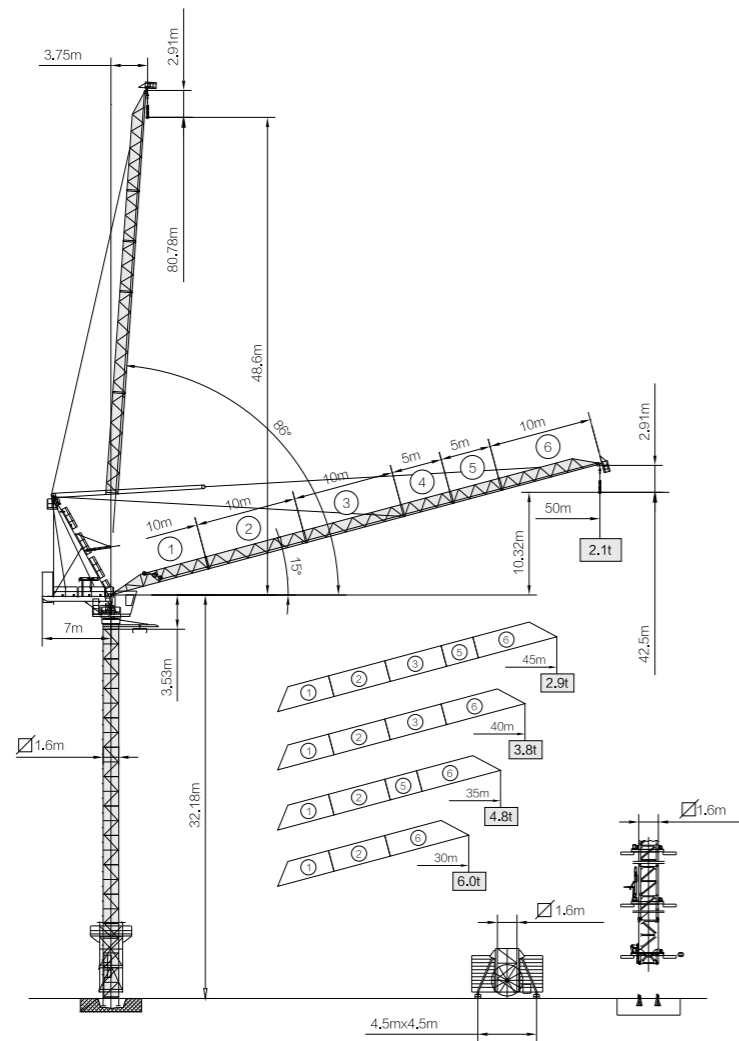


# LUFFING HL 150



MAST 1.6M X 1.6M

## SPECIFICATIONS (MECHANISMS)

	mechanism	↑		↓		↺		m	Power Kw
		m/min	t	m/min	t	m/min	t		
Hoisting	60LVF25	0-22.5	10	0-33.8	7.5	0-45	5	600	45
		0-45	5	0-67.5	3.75	0-90	2.5		
Luffing	33DVF30	≤3min		Ferquency control				Power 24Kw	
Slewing	RCV95	0-0.7r/min		Ferquency control				Torque 2X95N.m	
	RVF95	0-0.7r/min						Torque 2X95N.m	
Traveling	14TVF	0-25m/min		Ferquency control				2X5.2kw	
Power supply		CE138-ICE38				380V(±5%)/50Hz 420V(±5%)/60Hz			
Necessary electric power								100KVA	

## LOAD DIAGRAMS

Fall	Range(m)	3.75	20.5	25.2	30	32.7	35	40	45	50
	luffing degree	85.9° — 66.4°		59.7°	54.6°	50.9°	47.5°	39.4°	29.5°	15°
IV	Load (t)	10.00		7.40	5.50	4.80	4.25	3.27	2.50	1.90
III		7.50		5.60		4.90	4.35	3.37	2.60	2.00
II		5.00		4.45		3.47	2.70	2.10		

Fall	Range(m)	3.4	20.2	25.1	30	33.3	35	40	45
	luffing degree	85.9° — 64.1°		58.6°	50°	44°	41.3°	30.8°	15°
IV	Load (t)	10.00		7.40	5.60	4.80	4.36	3.40	2.70
III		7.50		5.70		4.90	4.46	3.50	2.80
II		5.00		4.56		3.60	2.90		

Fall	Range(m)	3.1	20.1	25	30	33.6	35	40
	luffing degree	85.9° — 60.8°		52.9°	43.6°	35.2°	32.3°	15°
IV	Load (t)	10.00		7.40	5.67	4.80	4.50	3.60
III		7.50		5.77		4.90	4.60	3.70
II		5.00		4.70		3.80		

Fall	Range(m)	2.7	20.4	25	30	34	35
	luffing degree	85.9° — 55.5°		46.5°	34.1°	19.1°	15°
IV	Load (t)	10.00		7.40	5.80	4.80	4.60
III		7.50		5.90		4.90	4.70
II		5.00		4.80			

Fall	Range(m)	2.3	20	25	30
	luffing degree	85.9° — 50°		36.4°	15°
IV	Load (t)	10.00		7.60	5.90
III		7.5		6.0	
II		5.00			

