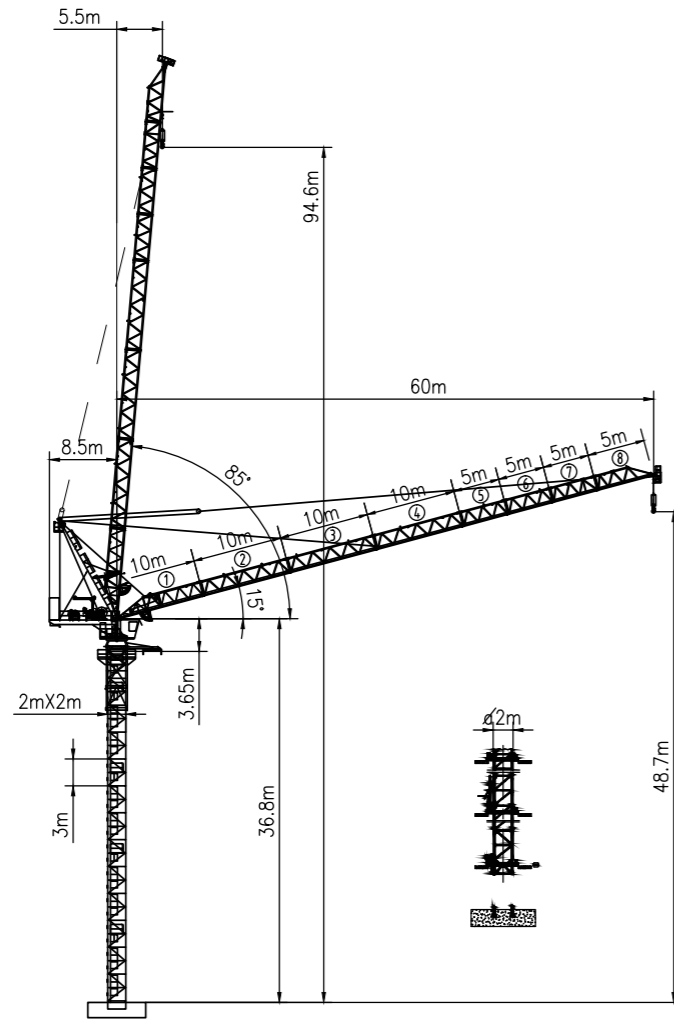


LUFFING HL 340



MAST 2M X 2M

SPECIFICATIONS (MECHANISMS)

	Mechanism	⬆		⬇		⬅		Ⓜ	Power	
		m/min	t	m/min	t	m/min	t		HP	KW
Hoisting ⬆	100LVF45	0-20	18	0-30	13.5	0-40	9	720	100	75
		0-40	9	0-60	6.75	0-80	4.5			
Luffing ⬇	75DVF50	≤ 3min		Ferquency control				Power 55KW		
Slewing ⬅	RCV185	0-0.7r/min		Ferquency control				Torque 2x185N.m		
	RVF185	0-0.7r/min						Torque 2x185N.m		
Traveing ⬅	18TVF	0-25m/min		Ferquency control				4x3.4kw		
Mains supply		CE138 = ICE38				380V(± 5%),50Hz 440V(± 5%),60Hz				
Necessary electric power		200KVA								

LOAD DIAGRAMS

Fall	Range(m)	5.5-39.11					40	45	50	55	60
II	Load (t)	9					8.71	7.09	5.78	4.7	3.8
Fall	Range(m)	5.1-29.8		30	35	39.56	40	45	50	55	
III	Load (t)	13.5		13.45	10.72	8.8	8.66	7.05	5.76	4.7	
II		9		8.86	7.25	5.96	4.9				
Fall	Range(m)	4.7-24.29	25	30	30.32	35	40	40.32	45	50	
IV	Load (t)	18	17.39	13.58	13.3	10.88	8.8	8.6	7.19	5.9	
III		13.5		11.08	9	8.8	7.39	6.1			
II		9		7.59	6.3						

